



Liver fluke: A guide to test-based control

Liver fluke infections are a major issue for the health and welfare of sheep and cattle. One of the challenges is understanding when and where the threat will occur as liver fluke risk changes from year to year, from farm to farm, and even from field to field.

It is vital to monitor the situation annually taking in to account previous clinical history, geography and physical attributes of the surrounding land and weather patterns, using fluke forecasts where possible

Building up a picture of the potential risk is really important to determine treatment product choice and timing - the detection (and treatment) options vary according to the level of maturity of the liver fluke present. The presence of liver fluke can be monitored in a number of ways:-

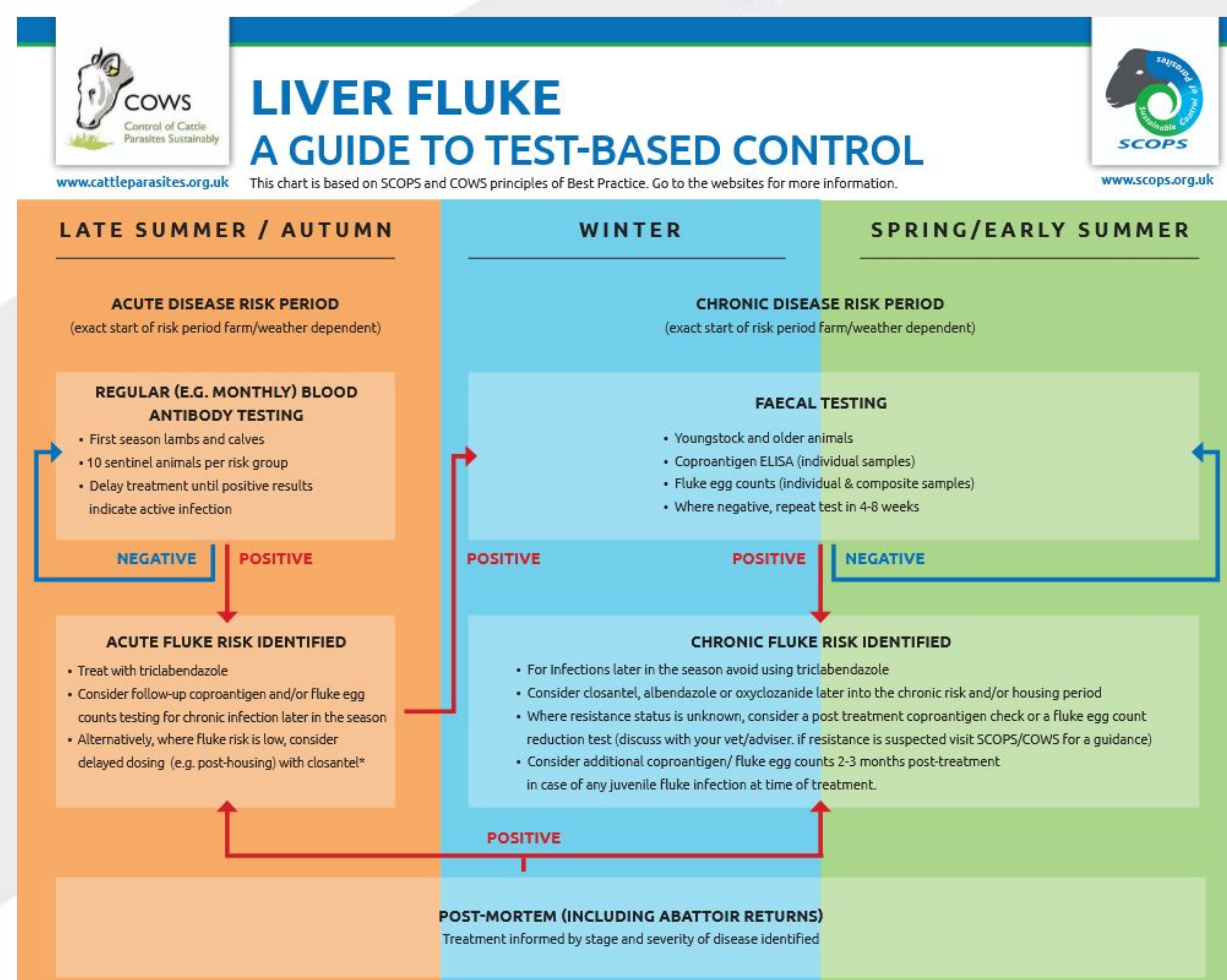
- New penside lateral flow device
- Blood antibody ELISA test
- Coproantigen ELISA test
- Faecal fluke egg counts
- Post mortem

In addition to testing, keeping records of areas on the farm most likely to present a risk of liver fluke can be a very useful tool.

Incorrect timing of products can mean that they fail to clear the infections, leading to health and welfare issues. Overuse of flukicides speeds up the development of anthelmintic resistance, can pose a risk to the environment and wastes time and money.

Additional resources

- https://www.scops.org.uk/workspace/pdfs/fluke-diagnostics-treatment-poster_1_1.pdf
- <https://www.scops.org.uk/internal-parasites/liver-fluke/>
- <https://scops-podcast.simplecast.com/episodes/liver-fluke-dealing-with-a-high-risk-forecast-TtPII85T>
- <https://scops-podcast.simplecast.com/episodes/dont-get-caught-out-by-liver-fluke-understanding-and-responding-to-risk-in-association-with-moredun>



The decision support resource developed in conjunction with SCOPS and COWs will help vets and farmers make better treatment decisions, saving time and money.



Funded by
the European Union

- <https://www.cattleparasites.org.uk/liver-fluke-and-rumen-fluke/>